

# MassLynx 4.2

## SCN 1011

### Release Notes

**MASSLYNX SOFTWARE CHANGE NOTE #1011 .....3**

**INTRODUCTION: .....3**

**INCLUDED DRIVERS: .....3**

**SUPPORTED COMPONENTS: .....3**

**OPERATING SYSTEMS: .....4**

**SECURITY:.....4**

**SCN 1011 INSTALLATION PROCEDURE: .....4**

**MS.....7**

**CONCESSIONS:.....7**

**INLETS .....8**

**CONCESSIONS:.....8**

**INFORMATIONAL: .....8**

**APPLICATIONS .....10**

**CONCESSIONS:.....10**

**SUPPORTED COMPUTERS, OPERATING SYSTEMS, HOTFIXES AND ANTI-VIRUS SOFTWARE:.....10**

# MassLynx Software Change Note #1011


## Introduction:

MassLynx® 4.2 Software Change Note (SCN) 1011 it provides support for ACQUITY SQD2 instruments on preparative instrumentation. This software change note includes enhancements and fault fixes as detailed in the sections below.

## Included Drivers:

The MassLynx Version 4.2 SCN 1011 installation includes the following drivers:

MS
ACQUITY SQD2 Detector

LC / Inlets	ICS Version
Waters 2017 R1	 Waters Driver Pack 2017 Release1Rev C.

## Supported Components:

The MassLynx Version 4.2 SCN 1011 installation supports the following drivers, for configuration recommendations, please contact your local Waters specialist:

Purification Components
ACQUITY SQD2
2545 Binary Gradient Module Pump
25X5 Quaternary Gradient Module Pumps
PCM II Pump Control Module

Purification Components
System Fluidics Organizer
3767 Sample Manager
Waters 2998 PDA or Waters 2498 UV and/or Waters 2424 ELSD
Isocratic Solvent Manager

SFC Components		
SFC Prep 150AP	Waters P-200 CO2 pump	Waters 2545 QGM co-solvent pump
Waters P-50 co-solvent pump (legacy systems only)	Waters 515 splitter pump. Two 515 pumps when using the legacy splitter	SSI 40 GLS makeup pump
Waters 3767 Sample Manager	Waters Stacked Injector	Waters Oven
Waters 2998 PDA	ACQUITY Isocratic Solvent Manager	ACQUITY SQD2

## Operating Systems:

MassLynx 4.2 SCN 1011 is supported on English version of Microsoft® Windows® 10 Enterprise LTSC 1607 on a Waters supplied Lenovo P520.

## Security:

MassLynx security is not supported.

## SCN 1011 Installation Procedure:

**Note:** This procedure requires Windows Administrator privileges and the user needs to logon to the computer as a local administrator (not any other/domain user with local administrator rights).

MassLynx 4.2 SCN 1011 is a complete installation of MassLynx 4.2.

**Note:** You cannot modify or repair an installation. Modifying or repairing an installation is not supported.

### Preparation:

Before installing MassLynx 4.2 SCN 1011, remove any existing MassLynx or MassLynx SCN installations using the Programs and Features utility in the Windows Control Panel.

To remove existing software applications:

1. Close any open software applications.
2. Open the Windows Control Panel, select the Programs and Features utility, and verify whether the following applications are installed. If they are, uninstall them.
  - MassLynx applications
  - Instrument drivers, such as Waters Pump Control, Waters 3767 drivers

**Note:** Use the deployment manager to remove the Waters Pump Control, if necessary.
3. If you uninstalled MassLynx, reboot the computer.
4. After you uninstall MassLynx applications, determine whether the C:\Program Files (x86)\Micromass Utilities\ICOP folder remains on the computer. If it does, delete it.

### Installation Procedure:

1. Insert the MassLynx SCN Installation media into the USB Drive.
2. From the Windows Start menu, select Run and enter <USB-Drive>:\setup.
3. Follow the installation prompts, accepting the default settings.
4. Click Finish to complete the installation.
5. Reboot the computer and log in to Windows.
6. If you selected the ACQUITY SQD2 option during installation, reboot the instrument embedded PC.
7. When the ACQUITY SQD2 Detector front panel status LED no longer flashes amber, start MassLynx and open the Inlet Editor.
 

**Note:** If you did not install the ACQUITY SQD2 option, you can immediately start MassLynx and open the Inlet Editor.
8. In the Deployment Manager, click Setup Instruments and then install any required Waters instrument drivers (ICS).

**Recommendation:** After you install the desired drivers, reboot the computer before continuing the inlet system configuration.

- Click Configure to launch the Inlet Configuration dialog box and complete the configuration of the inlet system.

### Installing stand-alone applications

Follow these instructions to install OALogin.

If earlier versions of these applications reside on the computer, use the Programs and Features utility in the Windows Control Panel to remove them before installing the SCN 1011 version of the application.

To install stand-alone applications:

- Close any open software applications.
- Insert the MassLynx SCN Installation media into the USB Drive.
- Navigate to the Applications folder on the Installation media and select the folder for the desired application.
- Double-click setup.exe.
- Follow the installation prompts, accepting the default settings.
- Click Finish to complete the installation.

### Installing and configuring the Adobe Print Driver

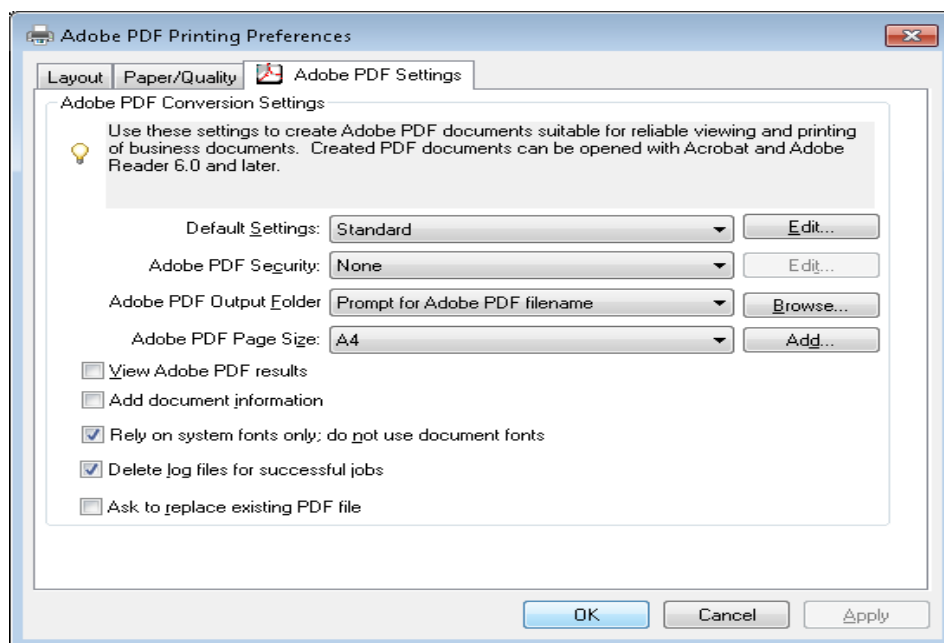
To use the “Print to PDF” options in MS Console and MS Method Editor, you must install the Adobe PDF print driver. This driver is part of Adobe Acrobat Distiller, which is included in Adobe Acrobat Professional. Adobe Acrobat Professional 9.0 is the recommended and validated version for use with MassLynx.

To install Adobe Acrobat Professional 9.0:

- Log in as an administrator and install Adobe Acrobat 9, accepting the default settings.  
**Note:** You might need to restart the computer.
- When the installation is complete, double-click the Adobe Acrobat 9 Standard icon on your desktop.
- Read and accept the license agreement, then close Adobe Acrobat.

For each user account on the host PC, follow these steps to configure the printing preferences:

- In the Windows Control Panel, ensure that Adobe PDF appears in the list of installed printers.  
**Note:** Do not alter or rename the Adobe PDF printer instance.  
**Recommendation:** Do not select Adobe PDF as the default printing device.
- Right-click Adobe PDF and select Printing Preferences.
- On the Adobe PDF Settings tab, ensure the following options are selected:
  - Default Settings: Standard
  - Adobe PDF Security: as appropriate
  - Adobe PDF Output Folder: Prompt for PDF filename
  - Adobe PDF Page Size: as appropriate
- Ensure that the “Rely on system fonts only; do not use document fonts” and the “Delete log files for successful jobs” options are enabled and that all other options are cleared.



5. Click Apply.
6. Click OK.

**Note:** This configuration allows you to enable automated printing of PDFs in IntelliStart™. To configure PDF printing for OALogin, specify the OALogin ReportDB directory (normally C:\MassLynx\OALogin\ReportDB) as the Adobe PDF Output Folder.

## Un-installation:

To remove existing software applications:

1. Close any open software applications.
2. Open the Windows Control Panel, select the Programs and Features utility, and verify whether the following applications are installed. If they are, uninstall them.
  - MassLynx applications
  - Instrument drivers, such as Waters Pump Control, Waters 3767 drivers

**Note:** Use the deployment manager to remove the Waters Pump Control, if necessary.
3. If you uninstalled MassLynx, reboot the computer.
4. After you uninstall MassLynx applications, determine whether the C:\Program Files (x86)\Micromass Utilities\ICOP folder remains on the computer. If it does, delete it.

**MS**

**General Note(s):** SCN 1011 is for the ACQUITY SQD2 detector.

**Concessions:**

The following table contains a list of known software issues for SCN 1011.

<b>General</b>
<p>MassLynx stops responding when you select the Network option in the Print Setup dialog box.</p> <p><b>Solution:</b> Configuring desired printers in the operating system ensures that printers are available in the MassLynx Print Setup dialog box. Selecting the Network option is not required.</p>
<p>If you plan to remove ICS instruments without replacing them with others, Waters recommends that you do not remove the ICS.</p> <p><b>Solution:</b> Unwanted instruments can be made unavailable in MassLynx and in the console.</p>
<p>When you remove the MassLynx software, the Waters DHCP error “Could not delete service” message sometimes appears.</p> <p><b>Solution:</b> If it does, acknowledge it. When the installation completes, restart the computer before attempting to install additional software.</p>
<p>If the Source Pressure test fails during the startup process, the Critical Readback check is not performed. If the Critical Readback check previously failed, it remains in failed status after the Source Pressure test passes.</p> <p><b>Solution:</b> You must cycle power to the instrument to allow for a new Source Pressure test.</p>
<p>MS methods created on a previous version of MassLynx are not compatible with the ACQUITY SQD2.</p>
<p>You cannot modify a sample list batch after you submit it.</p>
<p>The correct license revision is available in the customer hard copy and displayed in the SCN Installation wizard is incorrect.</p>
<p>To change Windows users, log off and then log on using a different user account. Do not use the “Switch users” option, which can introduce instability to the instrument.</p>

<b>Console / IntelliStart</b>
<p>The ACQUITY SQD2 does not appear on the console until a driver pack is installed. If no LC instruments are in use, you must install the Local Console controller from the driver pack in order for the ACQUITY SQD2 to appear on the console.</p>
<p>You must allow the console to finish loading before you select any options. Otherwise, the console can enter an error state.</p>
<p>When you are opening the console for the first time, console plots sometimes do not appear. Close and reopen the console to display expected plots.</p>

## INLETS

**General Note(s):** SCN 1011 is for the ACQUITY SQD2 detector.

### Concessions:

The following table contains a list of known software issues for SCN 1011.

General
<p>During inlet configuration, Waters deployment manager does not automatically launch when required.</p> <p><b>Solution:</b> Click Setup Instrument in the inlet configuration window to set up each ACQUITY component before configuring it in the Inlet Editor.</p>
<p>After configuring the Bed in Inlets, if you right-click the Sample List and select an Autosampler Bed Layout, the MassLynx application stops responding.</p> <p><b>Solution:</b> Close and reopen MassLynx.</p>
<p>In the Inlet Editor, when opening an Inlet window, if you do not click the OK button and try to open multiple Inlet Editor windows, the “Inlet stopped working” message will appear.</p> <p><b>Solution:</b> Click the OK or Cancel button in the Inlet Editor window which will allow you to open the other Inlet Editor window.</p>
<p>When installing inlet drivers, Waters recommends that you use the custom option to clear ACQUITY components that are not supported by the SQD2 (see Supported Products/Configurations section above), than using the default option, which installs all drivers.</p>
<p>During inlet configuration, Waters deployment manager does not automatically launch when required. To avoid this problem, click Setup Instrument in the inlet configuration window to set up each ACQUITY component, before configuring it in the inlet editor.</p>

### Informational:

#### Configuring the 3767 Autosampler

1. Open MassLynx software.
2. Click the Inlet Method icon.
3. Click the Tools tab and “Instrument Configuration...” in the Default – Inlet Method window.
4. Click the Configure button to select required instrument  
**Note:** You can configure the required instrument once drivers are installed.
5. In the Inlet Configuration Wizard Window:
  - Select Waters Pump Control option and click the Next > button.
  - Select Waters 3767 option and click the Next > button.
  - Select required detector to use with the system and click the Next > button.
  - Click “Scan For Instruments”, select the serial number of the detector connected to the system, then click the OK button.



• Click the Next > and Finish buttons

6. Click the Finish button in the Inlet Configuration Window
7. The instrument is now configured.

## APPLICATIONS

**General Note(s):** SCN 1011 is for the ACQUITY SQD2 detector.

### Enhancements:

The following table contains a list of software enhancements included in SCN 1011.

Support for the Waters 3767 Injector/Collector.
The Emergency Collection button has been added to the FractionLynx toolbar.

### Concessions:

The following table contains a list of known software issues and workarounds for SCN 1011.

MassLynx
Occasionally the “Run time” error message appears when launching the MassLynx application. <b>Solution:</b> Click OK in the pop out window and continue using the application. It doesn’t impact any processes of MassLynx.
When you connect the PC remotely (only on Windows 10), OALogin stops responding. <b>Solution:</b> The Instrument PC must be used for applications. Do not remotely connect to the PC.

### Supported Computers, Operating systems, Hotfixes and Anti-Virus software:

The following Windows updates are supported with MassLynx version 4.2 SCN 1011:

#### Windows 10 Enterprise LTSB 1607

Update	KB4345418
Update	KB4033393
Update	KB4049411
Update	KB4033631
Update	KB4132216

#### Antivirus

SCN 1011 was tested with Symantec Endpoint Protection Version 14 (14.0 RU1 MP1) build 3897 (14.0.3897.1101) anti-virus software.

**Note:** Waters recommends that you deactivate the Network Threat Protection on the acquisition computer.

In the Symantec scanned areas, do not include the following folders:

- For 64-bit computers: C:\Program Files (x86)\Waters Instruments and its subfolders
- The MassLynx installation folder C:\Masslynx and its subfolders.

## **Windows Updates**

Windows updates re-enable the PC firewall sometimes. After every Windows update, inspect the firewall to ensure that it remains deactivated.